

# IN K'AKNABIL NIN EXLOWAL AN ATIKLABTSIK XI K'IPCHONENEK O PIT'K'ONENEK

**KIN EJTO KIN CHU'U AN UTSBIXTALAB**  
KIN EJTO' KIN CHU'U O KA PIDHAN KIN CHU'U XIN  
BIJIYAM, XI K'UAJAT JAPIDH K'AL IN KUENTA TAM JUN  
XE'ECH TI ÁLIYAB O AL'IMAYAB



**KIN EJTO' KIN KONOY O KO'OY EJTI  
AN U'**

KIN EJTO' KIN KONOY O KO'OY ANI ANÍK'IJ EJTI AN U'  
XI K'UAJAT O IN KO'OL AN UTSBIXTALAB



**TOLMIXTALAB KÁL IN  
LEJBAXTALABIL IN XE'CHINTAL**

K'AL IN KUENTA TAM KA TOLMIXIN TI ÁLIM, ANI JEYE  
K'AL IN TOLMINTSIL K'AL XIN ACH'AL IN KO'OL

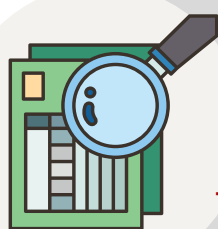


**LEJBAXTALABIL O BELOKNAXTALABIL  
K'AL IN XE'CHINTAL**

KIN EJTO' KIN KONOY O KO'OY ANI ANÍK'IJ EJTI AN U'  
XI K'UAJAT O IN KO'OL AN UTSBIXTALAB

**PIL T'OJODHTSIK**

NE'ECH KIN EJTO' KIN KONOY ABAL KA TOLMIXINTSIK I  
T'OJODHTSIK XI TECHE' TI BITSOWIL LABTOMLAB O  
JUNPAK'E BITSOTSIK K'AL IN KUENTA TAM XE'ECH TI 'ALIYAB  
JUN



**KIN CHO'OBNA TAM KA ÉLÁN IN  
BEKLEK O IN T'UÚL I ATIKLABTSIK**

KA OLTSIN JIK'ATK'IJ, TAM KA ÉLÁN JUN IN BEKLEK O IN  
T'UÚL I ATIKLABTSIK ANI JEYE TAM CHOÓBTEJÍCH XITA' JÁ.

**KA TOLMIXIN K'AL AN  
ALIMTALAB ANI AL'IMAXTALAB**

KA TOLMIXIN XON TI YEJAT, JUNAX K'AL NIN  
EXLOWALTSIK, XANTI KÚAJAT DHUTSADH BAN U' K'AL  
NA JE' IN KUENTA



**KA PIDHAN JUN I OLTSIXTALAB**

ABAL KIN WALKA' ANI KIN PIDHA AN ATIKLABTSIK XU  
TOLMIX TI ALIMTSIK ABAL KIN EJTO' KIN CHU'U AN  
UTSBIXTALAB BAN PUNK'UDHTSIK



**KIN ULUJ ANI KIN PIDHNA NIN  
CHALAPIL**

KIN ULUJ XANTI YEJAT KA TÁJAN AN DHUTSADH  
TOLMIXTALAB K'AL IN KUENTA AN AL'IMAXTALAB



**JALBINTSIXTALABIL AN WALASTALAB**

KIN EJTO' KA OCHICH BAN PROGRAMATSIK ANI EJTI AN  
TOLMIXTALAB XIN AN PUNK'UDHTSIK KIN T'AJA O KIN  
KALDHA ABAL AN TOLMIXTALAB O JALBINTSIXTALAB XANTI  
IN ULAL AN TSUBAXTALAB