



JANTI ANI JOWK'IJ YEJAY KA USTBIY JUN I WALASTALAB K'AL IN KUENTA AN BOTARIXTSIK



MAS KA WA'CHIN JU I WALASTALAB XI DHUTSADH BAN TSUBAXTALAB ANI IN ULAL ABAL IN WALASTALABIL IN KUENTA AN BOTARIXTSIK, XITACHAK NEKIN EJTO KIN UTSBIY JE'TAM.

- **Korreo electrónico:** delitoselectorales@fiscaliaveracruz.gob.mx.
- DHUTSADH NE'ECH KA EJTO KA JUNA' BAN PUNK'UDH AWILTALAB XIN AL'IMAYAL AN WALASTALAB XIN KUENTA K'AL AN BOTARIXTSIK XI K'UAJAT XALAPA.
- AL'IMAX AWILTALABTSIK XI K'UAJAT VERACRUZ, CORDOBA, COSAMALOAPAN, TUXPAN, TANTOYUCA Y COATZACOALCOS
- AL'IMAX AWILTALAB ITINERANTE HUAYACOCOTLA, CHICONTEPEC, TANTOYUCA, PAPANTLA, ORIZABA, ZONGOLICA, HUEYAPAN DE OCAMPO Y UXPANAPA.



MAS A KO'OL XANEY XONTI DHALITS ABAL T'AJNEK AN WALASTALAB YEJAT KA UMA O KA JUNÁ



IN BIJ KIDHATSIK AN TOLMIXTSIK, (CHU'LAMADHITSIK)



FOTOTSIK



UJ'TSIK



BIDHEOTSIK



KAWTALABTSIK

KI UTSBIXIN TAM AN WALASTALAB TAMNEK TAM WA'ACH I ELECCIONTSIK ABAL I

- GOBERNADORTSIK
- DIPUTADHOTSIK
- AWILTALAB XI BAN TSITSIK BITSOWTSIK



PUNK'UDH AWILTALAB XIN AL'IMAYAL AN WALASTALAB XIN KUENTA AN BOTARIXTSIK

KI UTSBIXIN BIN AJUMTAL AN PAT'AL TAWNAXTALAB 22 88 41 93 13 ANI BAN
delitoselectorales@fiscaliaveracruz.gob.mx



QR, PARA AGREGAR LOS DATOS DE LA FISCALIA ESPECIALIZADA EN DELITOS ELECTORALES A TUS CONTACTOS

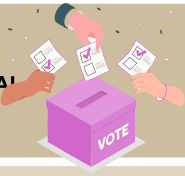


KA UTSBIY XI

KIN TAMK'UY AN BOTARIXTSIK



KA BOTARIKIN TAM IN CHO'OB ABAL YAB IN T'AJA' XANTI IN ULAL AN TSUBAXTALAB



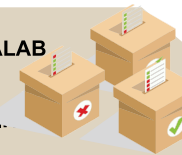
KIN I'YA' AN BOTARIXTSIK ABAL KIN EJTO KIN ATÁ JUN



KA BOTARIKIN JUNIL O CHABIL TAMK'IJ



KIN TAMK'UY AN AWILTALAB XIN NE'DHAL O NEKIN AKIY AN UJTSIK K'AL IN KUENTA AN BOTARIXTSIK



KIN AT'AX ULÚ AVAL NE'ECH KIN JILA KIN PIDHA AN TOLMIXTALAB XU PIDHNA K'AL AN T'OJODHITSIK MAS KA BOTARIKIN



KIN DHUTSUNTSI YAN XANEY BAN UJ K'AL IN KUENTA TAM WA'ACH AN ELECCIONTSIK



KIN JALBIY AVAL KA BOTARIYAT



KA ULICH TI BOTARIKIN K'AL JUN I KREDENCIAL TAM JAJA' YAB IN DHABAL



KIN KONOY JUN I ÚJ O I FOTOTSIK O TI UTSA KA T'AJA JUN I ÚJ ABAL JAJA NEKA MILKOY.



KIN K'ANIY, KIN ODHIY, KIN UMTSI XANEY, KIN BELDHA, KIN NUJU AN CREDENCIALTSIK, AN UJ XON TI TAL JAXI NEKIN EJTO TI BOTARIKIN ANI I KAJTSIK XONTI TAL AN BOTARIXTSIK



KIN JÍLA' JUN O MAS I CREDENCIALTSIK XIN K'AL AN ATIKLABTSIK XANTI' YAB K'UAJAT DHUTSADH BAN TSUBAXTALAB



KI UTSBIXIN BIN AJUMTAL AN PAT'AL TAWNAXTALAB 22 88 41 93 13 ANI BAN
delitoselectorales@fiscaliaveracruz.gob.mx